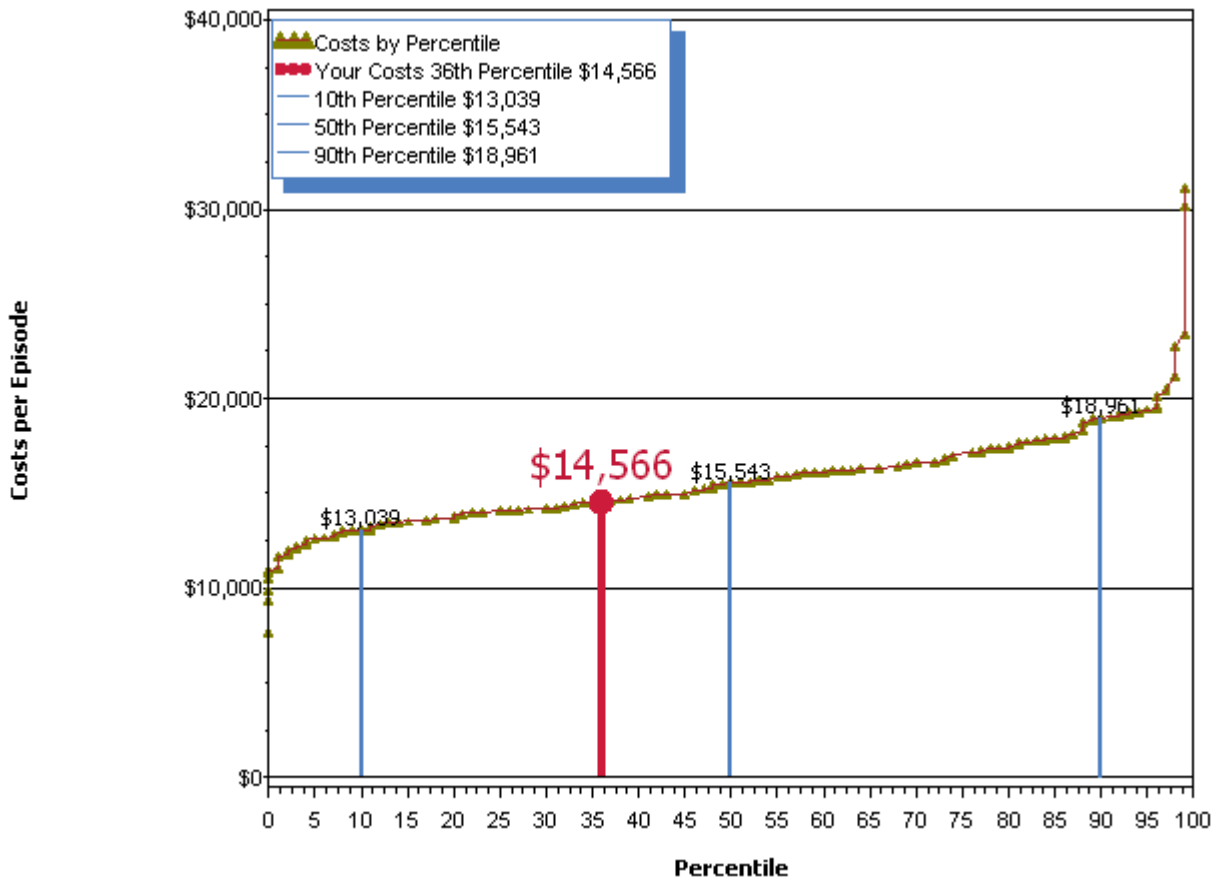


Per Episode Costs: Acute Myocardial Infarction

Based on all Medicare Part A and Part B claims submitted for 38 episodes of care for Acute Myocardial Infarction in 2005-2007, the average per episode costs for your Medicare patients with this condition was \$14,566.

Exhibit 10.AMI shows the per episode costs of care for Cardiology physicians in IN treating Medicare patients with Acute Myocardial Infarction in 2005-2007, from lowest to highest, by percentile. The average per episode costs of your patients with Acute Myocardial Infarction was higher than **36 percent** of all other Cardiology physicians in IN treating this same condition.

Exhibit 10.AMI. Per Episode Costs of Care for Acute Myocardial Infarction Among Cardiology Physicians Treating This Condition in IN from 2005 to 2007, by Percentile



Costs of Service Per Episode: Acute Myocardial Infarction

The per episode costs for selected [service categories](#) for your Medicare patients with Acute Myocardial Infarction, compared to those of other Cardiology physicians in IN treating this same condition are shown in **Exhibit 11.AMI**. The costs for each category are averaged across all episodes, not just the episodes that involved the service. For example, if you had 53 episodes for this condition, and 14 of the episodes involved clinic or emergency visits, the costs shown are averaged across all 53 episodes, rather than across only the 14 with clinic or emergency visits. In some cases, costs for a given category (e.g., E&M services provided by other physicians treating your patients) may be greater than the sum of the sub-categories (e.g., primary care physicians, medical specialists, etc.), because the category costs include other costs not broken out separately (e.g., nurse practitioners, physician assistants, etc.).

Exhibit 11.AMI. Per Episode Costs of Services for Medicare Patients with AMI, 2005 - 2007

Service Category	Average Costs for Your AMI Patients	Avg Costs of Median Cardiology Physicians Treating AMI in IN
Costs of Professional Evaluation & Management Services		
Provided by YOU for your patients	\$2,843	\$857
Office, Outpatient, or Emergency Visits	\$0	\$0
Inpatient Hospital Visits	\$1,990	\$582
Consultations	\$853	\$49
Provided by OTHER physicians treating your patients	\$1,326	\$959
<i>Primary Care Physicians</i>	\$0	\$0
<i>Medical Specialists</i>	\$1,149	\$568
<i>Surgeons</i>	\$0	\$0
<i>Emergency Room Physicians</i>	\$0	\$0
Costs of Hospital Services		
Inpatient Hospital Facility Services	\$8,953	\$11,071
Outpatient and Emergency Services	\$0	\$0
Clinic or Emergency Visit	\$0	\$0
Procedures	\$0	\$0
Laboratory Tests	\$0	\$0
Imaging Services	\$0	\$0
Costs of Procedures in All Settings		
Provided by YOU for your patients	\$0	\$0
Provided by OTHER physicians treating your patients	\$0	\$0
<i>Primary Care Physicians</i>	\$0	\$0
<i>Medical Specialists</i>	\$0	\$0
<i>Surgeons</i>	\$0	\$0
<i>Emergency Room Physicians</i>	\$0	\$0
Costs of Services in Ambulatory Settings		
All Ancillary Services	\$771	\$310
Lab Tests	\$33	\$32
Imaging Services	\$739	\$229
Durable Medical Equipment	\$0	\$0
Costs of Post-Acute Care		
All Post-Acute Services	\$295	\$5
Skilled Nursing Facility	\$0	\$0
Psychiatric or Rehab Facility	\$0	\$0
Hospice	\$0	\$0
Home Health	\$295	\$0

Per Episode Utilization of Hospital Services: Acute Myocardial Infarction

Exhibit 12.AMI provides additional information on your Acute Myocardial Infarction patients' average utilization of hospital services, compared to Acute Myocardial Infarction patients of your peers treating this same condition. If your patients did not have any hospitalizations for this condition, this exhibit will not have any entries.

Exhibit 12.AMI. Hospital Utilization Per Episode: Acute Myocardial Infarction, 2005 - 2007

	Rates for Your AMI Patients	Rates of Median Cardiology Physicians Treating AMI in IN
Emergency Room Visits per Patient per Episode	0.76	0.67
Hospital Admissions per Patient per Episode	1.03	0.96
Average Length of Stay for Hospitalized Patients per Episode (Days)	7.56	5.15